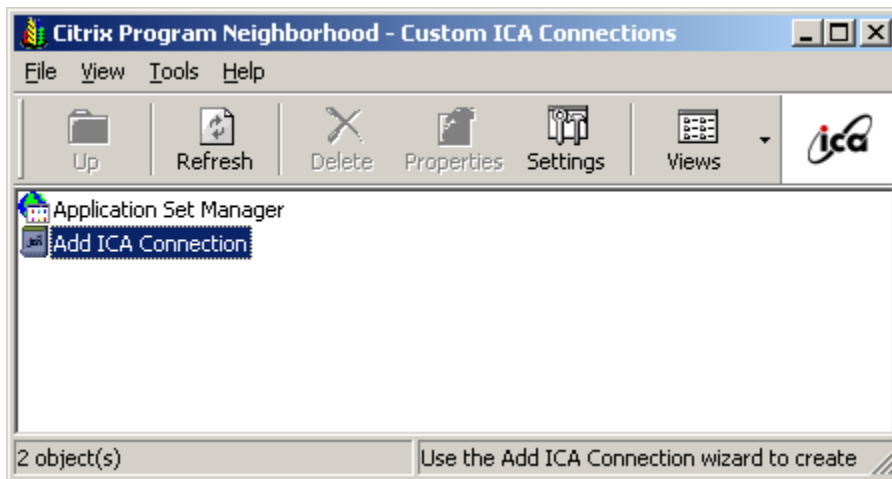
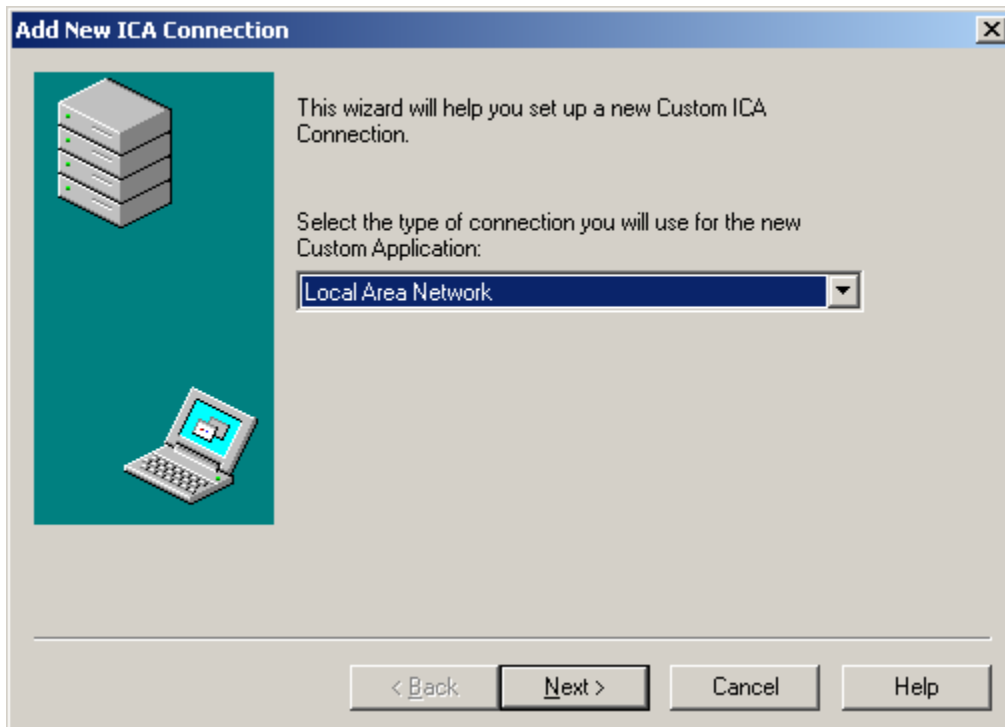


Windows XP Citrix Workaround for Brokers accessing SeQueL Applications

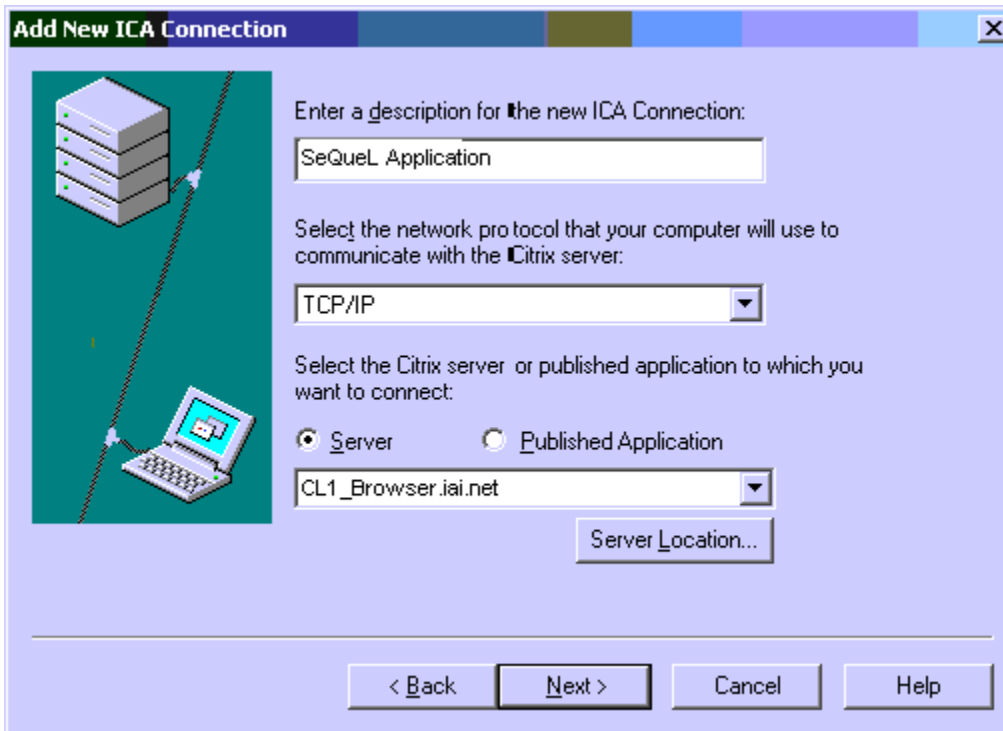
Open the Citrix Program Neighborhood icon on the desktop or click start – All programs – Citrix ICA Client - Citrix Program Neighborhood



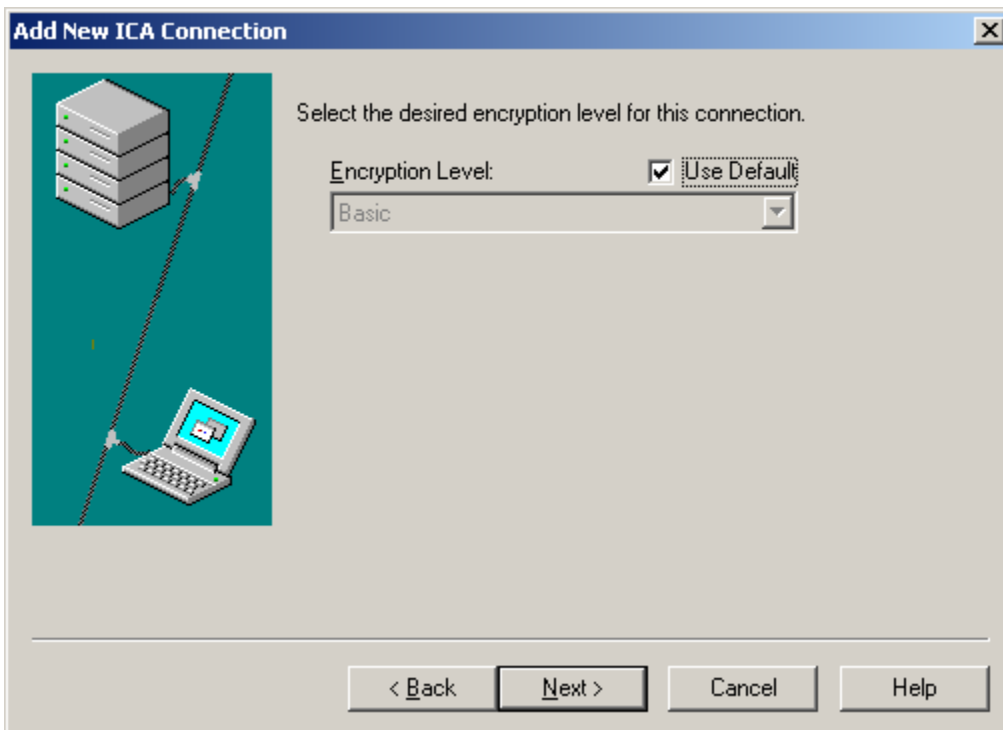
Double click on Add ICA Connection



Select Local Area Network, then click Next.



Enter the Description, Network Protocol and Server IP Address, listed above.



Click Next to use the Default encryption level.

Add New ICA Connection [X]

Enter a User name, Password, and Domain, to use with this Connection. If you leave these fields blank, you will be prompted for this information when you connect.

User name:
[]

Password:
[]

Domain:
[]

Use local User name and Password

< Back Next > Cancel Help

Leave the User Name, Password and Domain fields, blank. Click Next