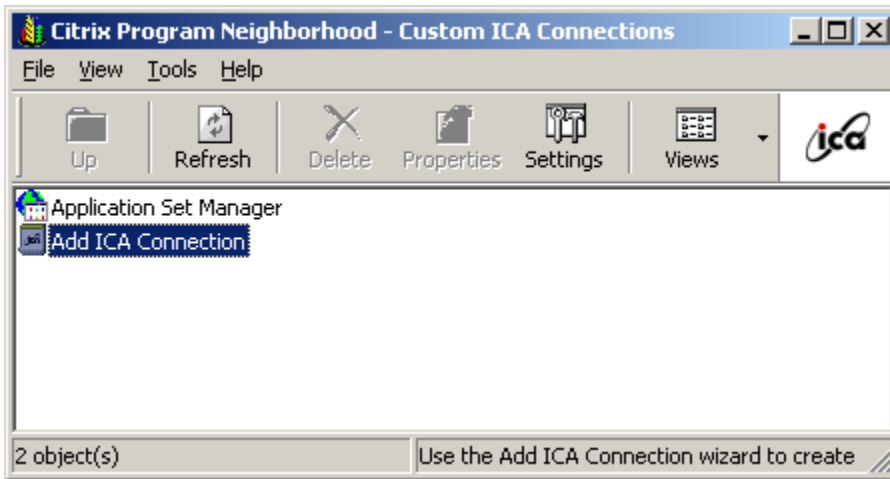
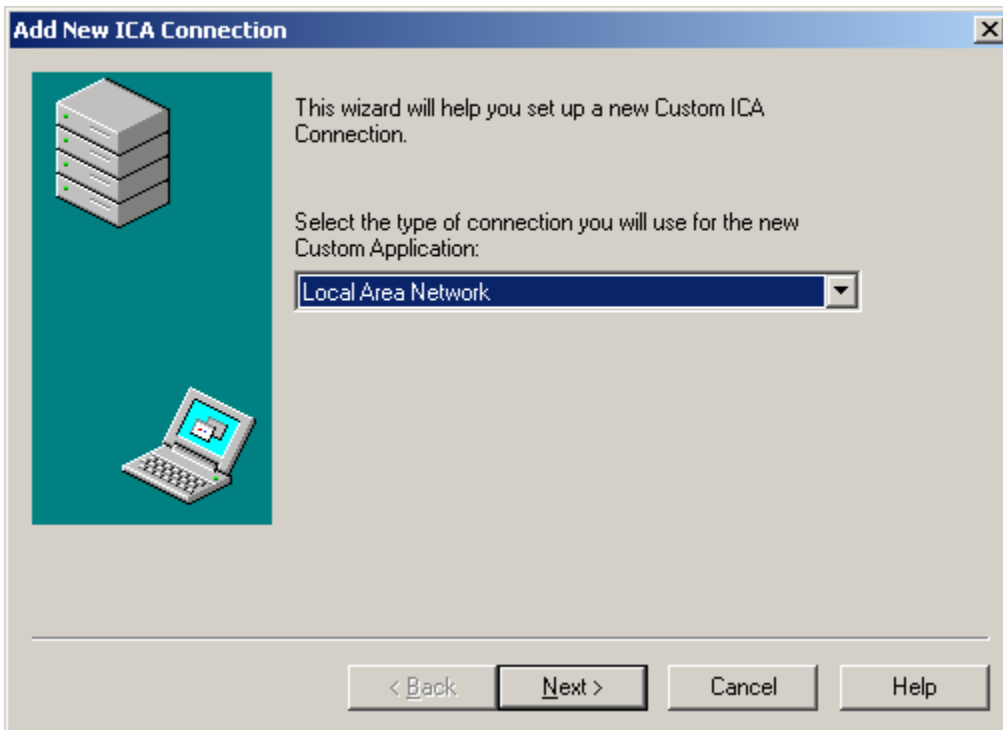


Windows XP Citrix Workaround

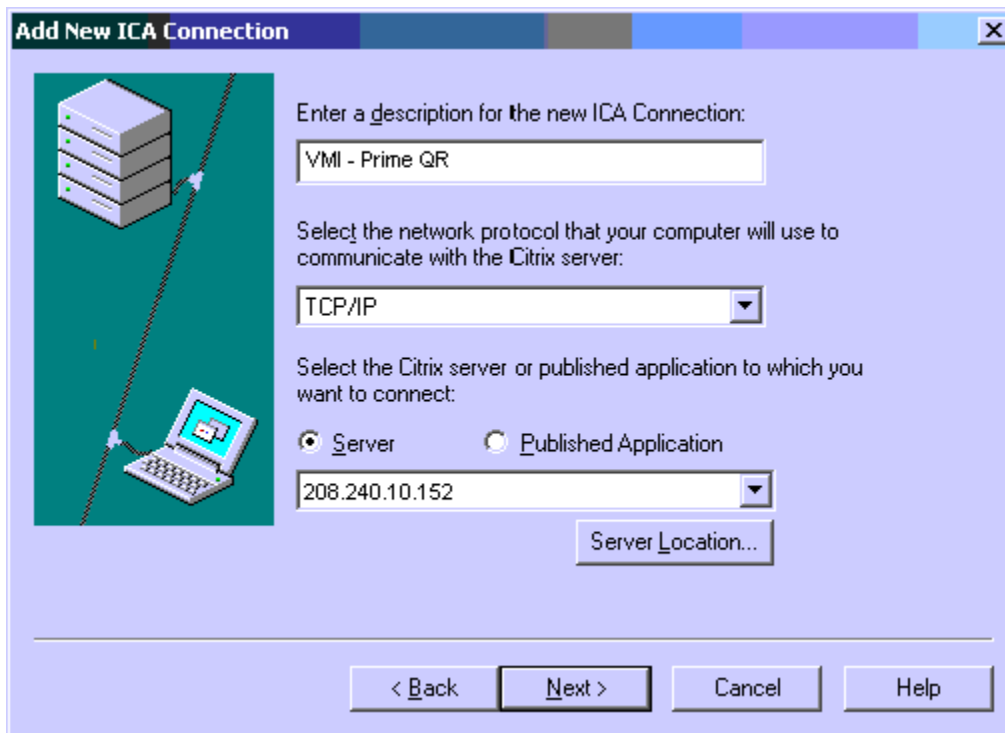
Open the Citrix Program Neighborhood icon on the desktop or click Start – All programs – Citrix ICA Client - Citrix Program Neighborhood



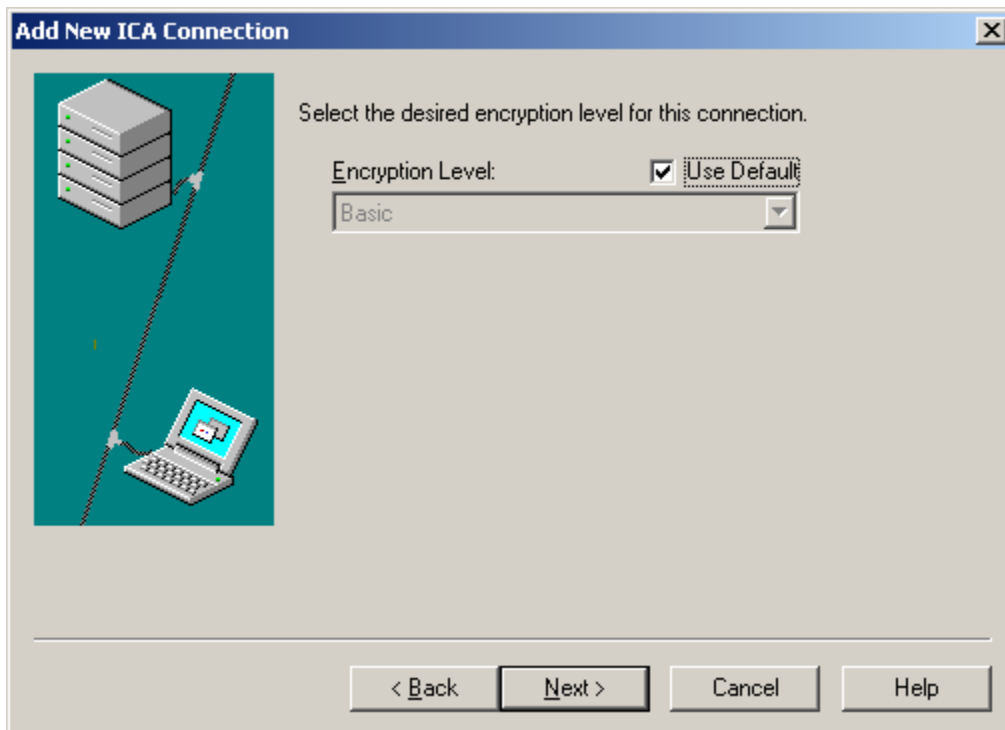
Double click on Add ICA Connection



Select Local Area Network, then click Next.



Enter the Description as VMI - Prime QR. Select the Network Protocol as TCP/IP and the Server IP Address of 208.240.10.152.



Click Next to use the Default encryption level.

Add New ICA Connection

Enter a User name, Password, and Domain, to use with this Connection. If you leave these fields blank, you will be prompted for this information when you connect.

User name:
[]

Password:
[]

Domain:
[]

Use local User name and Password

< Back Next > Cancel Help

Leave the User Name, Password and Domain fields, blank. Click Next

Add New ICA Connection

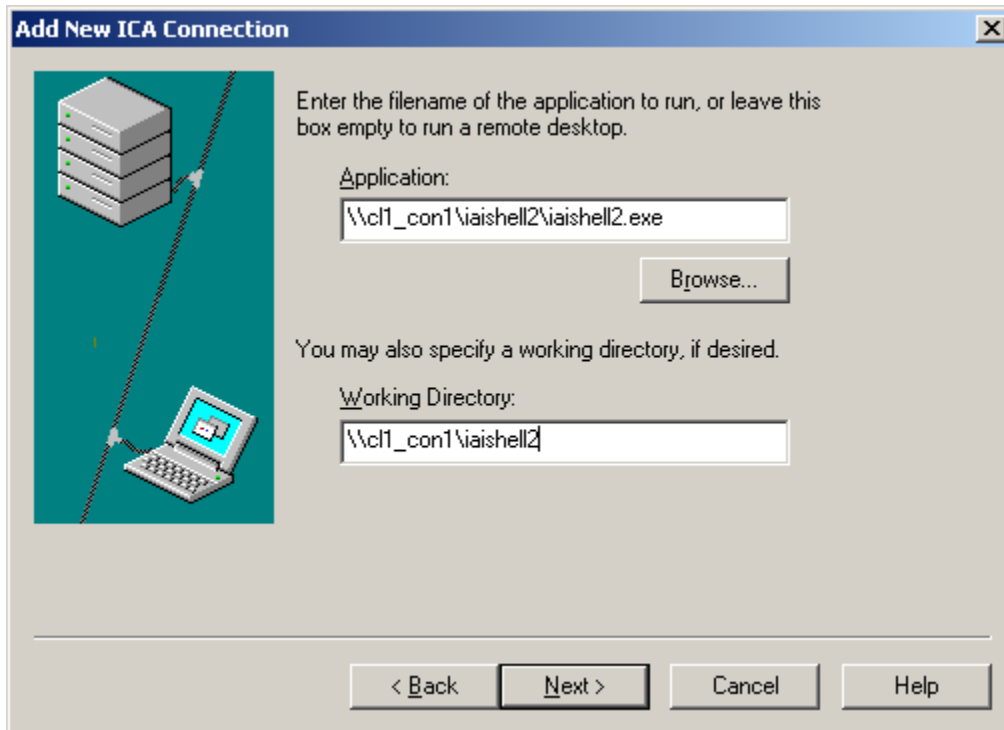
This application you are connecting to is configured with default display options. If you would like to override these defaults, you can do so below.

Window Colors: Use Default
256 Colors

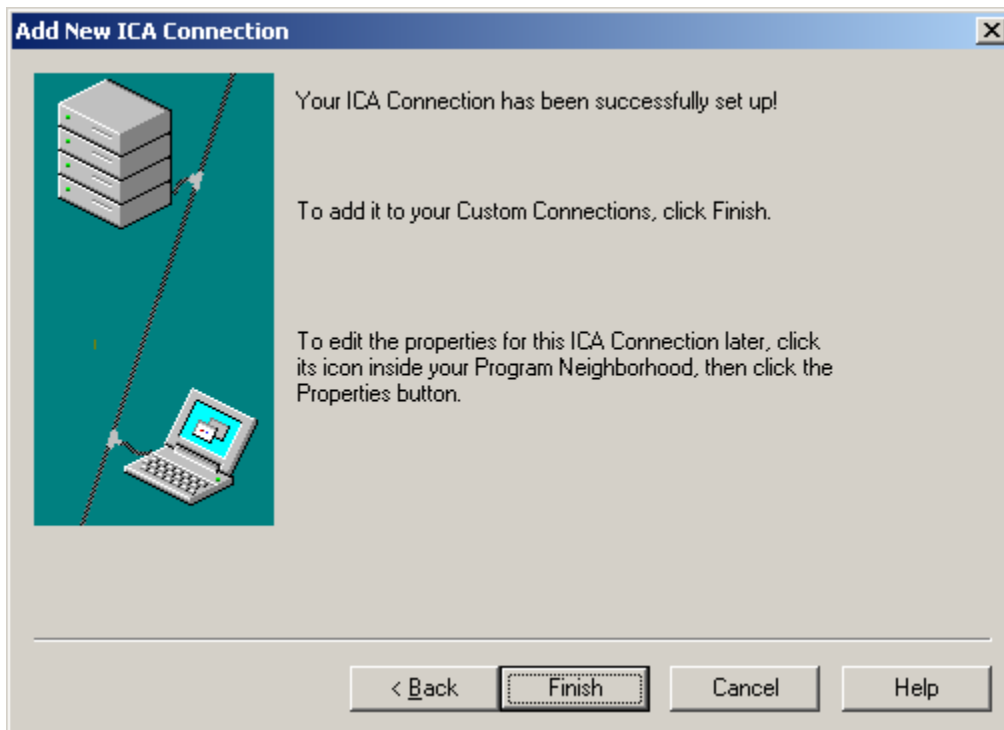
Window Size: Use Default
640 X 480

< Back Next > Cancel Help

click Next on the Display option screen.



In the Application field enter [\\cl1_con1\iaishell2\iaishell2.exe](#)
In the Working Directory enter [\\cl1_con1\iaishell2](#) then click Next



Click Finish and you are done.
Double click on the entry you just created and login as usual.